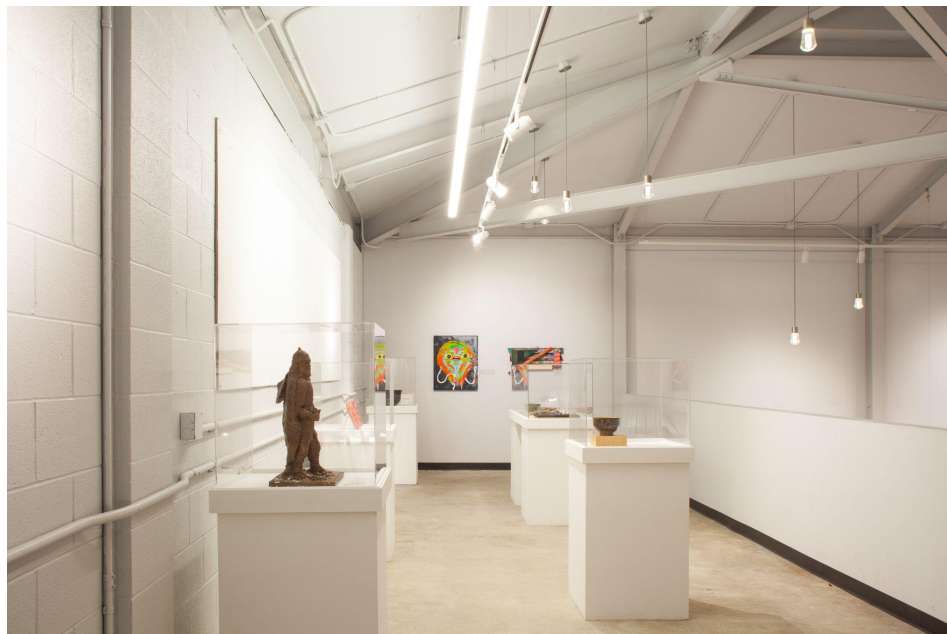




Columbus Academy Art Gallery



## The Space

1180 sq ft of space plus additional loft space

Three large moveable walls

Various pedestals with optional protective plexiglass tops

Large windows for natural light in combination with LED track lighting

Lower level hallway walls and lighted display cases

All exhibition pieces are insured



## Gallery History

Opened in Fall 2016 following renovation of Morris Hall for use by the Upper and Middle School Art Departments

The space was previously used as the MS/US library and 8th grade classrooms

Prior to the gallery opening, the theater lobby was used to display artwork

The inaugural exhibition in this space was Jonathan Noltner: A Peace of Mind



## Exhibition History

2016-2017

Jonathan Noltner: A Peace of Mind

Alumni Exhibition featuring Andrea Myers, Andy Rahe, Glen Wilson, and Drew Yakscoe

2017-2018

Mid-20th Century European Paintings from the Henry Collection

Contemporary Painting, Traditional Art, Textiles & Artifacts of Spain and Latin America

The Columbus Crossing Borders Project

A Personal Process: The Art & Life of Toshiko Takaezu

Edmund Kuehn student curated exhibition

2018-2019

Selection from the Alumni Collection

Laurie Clements

French Leave Collective

Selections from *To Be A Drum*: Aminah Brenda Lynn Robinson

2019-2020

Primitive Artifacts from the Henry Collection

Faculty & Staff Show

Math Meets Art

2021-2022

Accessible Expressions Ohio

Jeff Stelle: Audience of One

City of Hope: Resurrection City & the 1968 Poor People's Campaign





## Exhibition Planning

Arts faculty seek out local and national artists for visiting exhibitions  
Many artists are found through connections with local artists and arts groups as well as through Academy family connections

The gallery schedule is planned out before each school year begins

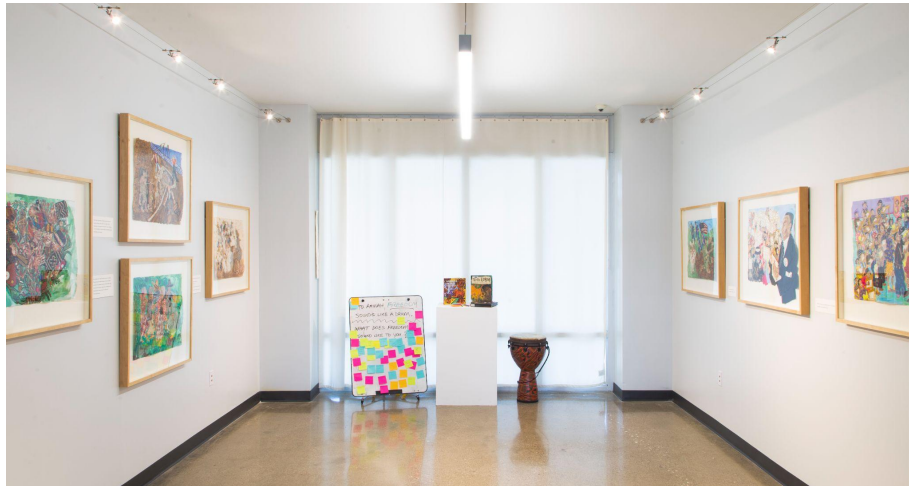
There are generally about four exhibitions per year outside of the two yearly student shows

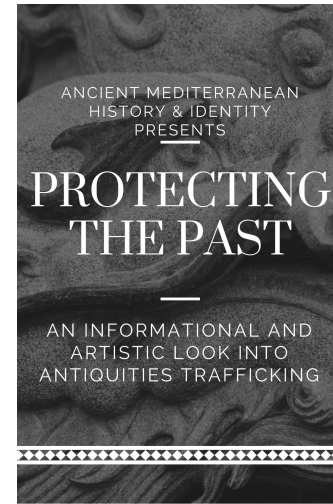
At times, multiple exhibitions may run concurrently

The gallery manager works with galleries and special collections to acquire and hang work

Exhibiting artists are often invited to talk to students about their work

Public receptions are provided when possible





## Student Work

Student artwork is highlighted in various ways throughout the year

There are two official recurring student exhibitions each year

The Annual Student Show takes place each fall and features work from all three divisions and is curated by Fine Art faculty

The Senior Art Show opens each April and displays a mix of work by 12th graders enrolled in an art class

Art teachers hang projects from their classes in between exhibitions

Specialty student shows take place from time to time when a teacher, a class, or group of students wants to showcase a special project or have a small themed show

Many teachers incorporate gallery exhibitions into their classes, bringing students of all ages through the gallery for lessons

It is common practice for art classes to have discussions about current exhibitions and complete assigned gallery response forms